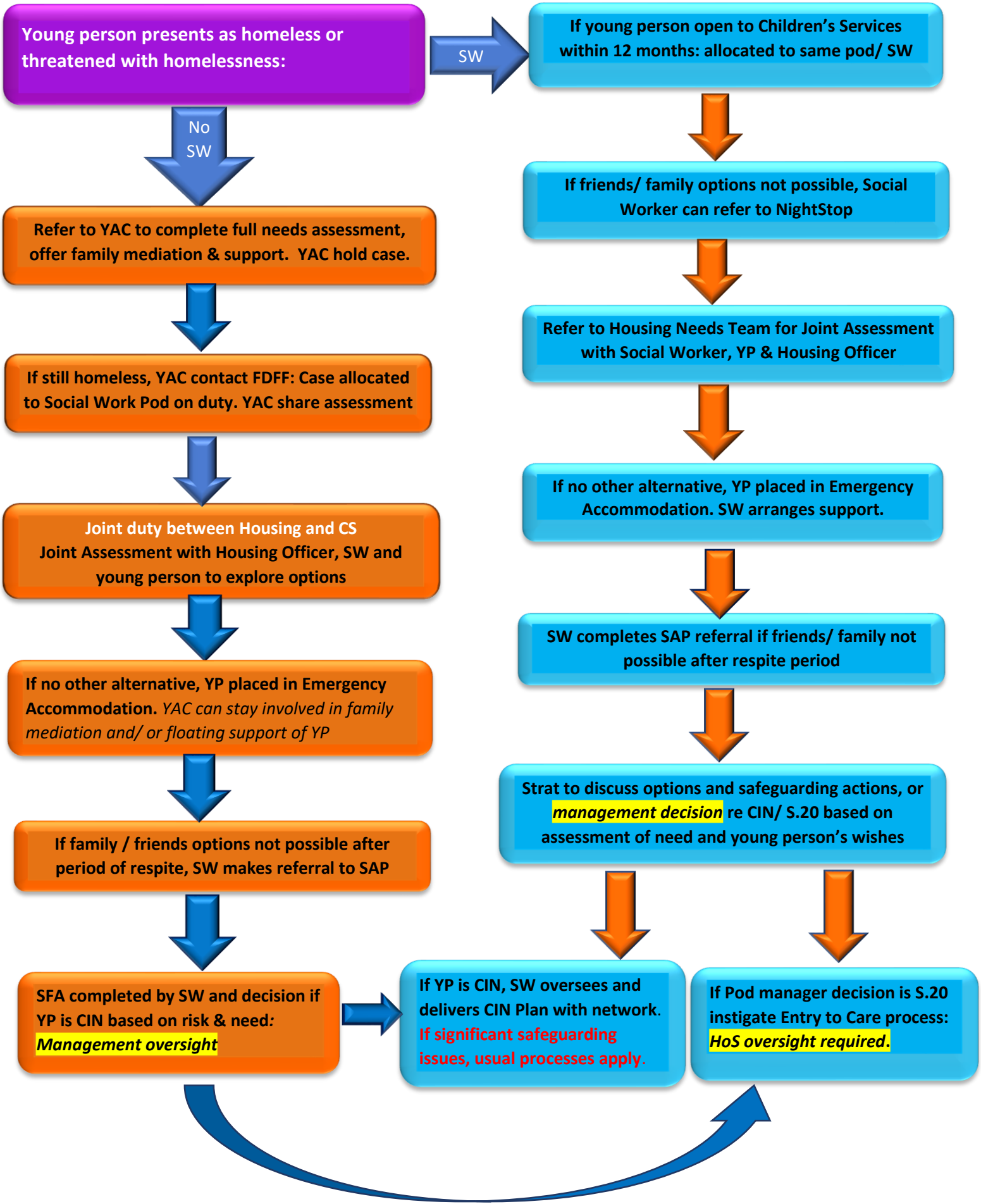


## Brighton & Hove Joint Homelessness 16/17 year olds Process



Young person presents as homeless or threatened with homelessness:

SW

If young person open to Children's Services within 12 months: allocated to same pod/ SW

No SW

Refer to YAC to complete full needs assessment, offer family mediation & support. YAC hold case.

If friends/ family options not possible, Social Worker can refer to NightStop

If still homeless, YAC contact FDFD: Case allocated to Social Work Pod on duty. YAC share assessment

Refer to Housing Needs Team for Joint Assessment with Social Worker, YP & Housing Officer

Joint duty between Housing and CS  
Joint Assessment with Housing Officer, SW and young person to explore options

If no other alternative, YP placed in Emergency Accommodation. SW arranges support.

If no other alternative, YP placed in Emergency Accommodation. YAC can stay involved in family mediation and/ or floating support of YP

SW completes SAP referral if friends/ family not possible after respite period

If family / friends options not possible after period of respite, SW makes referral to SAP

Strat to discuss options and safeguarding actions, or **management decision** re CIN/ S.20 based on assessment of need and young person's wishes

SFA completed by SW and decision if YP is CIN based on risk & need: **Management oversight**

If YP is CIN, SW oversees and delivers CIN Plan with network. **If significant safeguarding issues, usual processes apply.**

If Pod manager decision is S.20 instigate Entry to Care process: **HoS oversight required.**